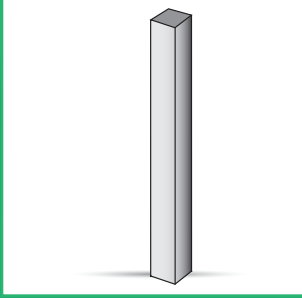
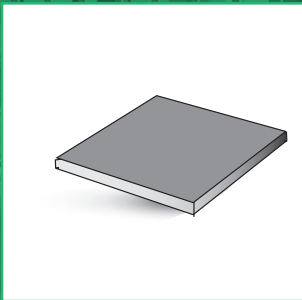


## G.I. SQUARE HOLLOW POST



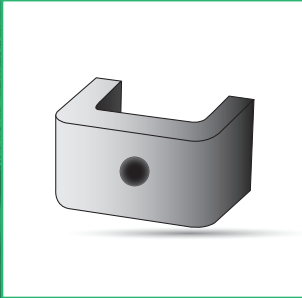
| FENCE HEIGHT (MM) | PROPOSED SPECIFICATION       |
|-------------------|------------------------------|
| 900               | 50MM X 50MM X 2.3MM X 1200MM |
| 1200              | 50MM X 50MM X 2.3MM X 1500MM |
| 1500              | 50MM X 50MM X 2.3MM X 2000MM |
| 1800              | 65MM X 65MM X 2.3MM X 2400MM |
| 2100              | 65MM X 65MM X 2.3MM X 3000MM |
| 2400              | 65MM X 65MM X 2.3MM X 3000MM |

## G.I. WELDED POST CAP



| FENCE HEIGHT (MM) | PROPOSED SPECIFICATION |
|-------------------|------------------------|
| 900               | 50MM X 50MM X 3.0MM    |
| 1200              | 50MM X 50MM X 3.0MM    |
| 1500              | 50MM X 50MM X 3.0MM    |
| 1800              | 65MM X 65MM X 3.0MM    |
| 2100              | 65MM X 65MM X 3.0MM    |
| 2400              | 65MM X 65MM X 3.0MM    |

## G.I. C-CLIP



| FENCE HEIGHT (MM) | PROPOSED QUANTITY    |
|-------------------|----------------------|
| 900               | QUANTITY OF POST X 3 |
| 1200              | QUANTITY OF POST X 4 |
| 1500              | QUANTITY OF POST X 5 |
| 1800              | QUANTITY OF POST X 6 |
| 2100              | QUANTITY OF POST X 7 |
| 2400              | QUANTITY OF POST X 8 |

## G.I. FASTENER SCREW – 8MM x 50MM



| FENCE HEIGHT (MM) | PROPOSED QUANTITY    |
|-------------------|----------------------|
| 900               | QUANTITY OF POST X 3 |
| 1200              | QUANTITY OF POST X 4 |
| 1500              | QUANTITY OF POST X 5 |
| 1800              | QUANTITY OF POST X 6 |
| 2100              | QUANTITY OF POST X 7 |
| 2400              | QUANTITY OF POST X 8 |

**NOTE:**

1. The sizes of the post may varies depending on the drawing specification or customer request.